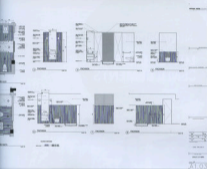


House in Santa Elena by Antonio Gattin



ONE-OFF HOUSES



House in Santa Elena

Brief: To design a cottage no larger than 100m² that would complement the view with an almost imperceptible mark to the site. Santa Elena is a rural farming area up in the mountains, east of Medellín, Colombia. The architect wanted the natural landscape to continue its course so the house is accessed through a very discrete opening in the roofdeck emphasized by a pink mosaic wall. The client requested two bedrooms, one bathroom, a small kitchen and meditation room. There was no need to provide a heating or air-conditioning system; the climate gets only very slightly cool at night so interior materials like cork plank flooring help maintain the heat captured during the day.

Architect: Antonio Soler (www.antoniosoler.com)
 Photography: Carlos Robles